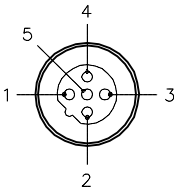


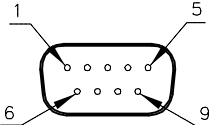
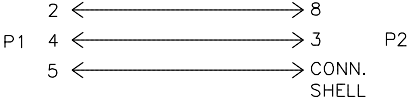
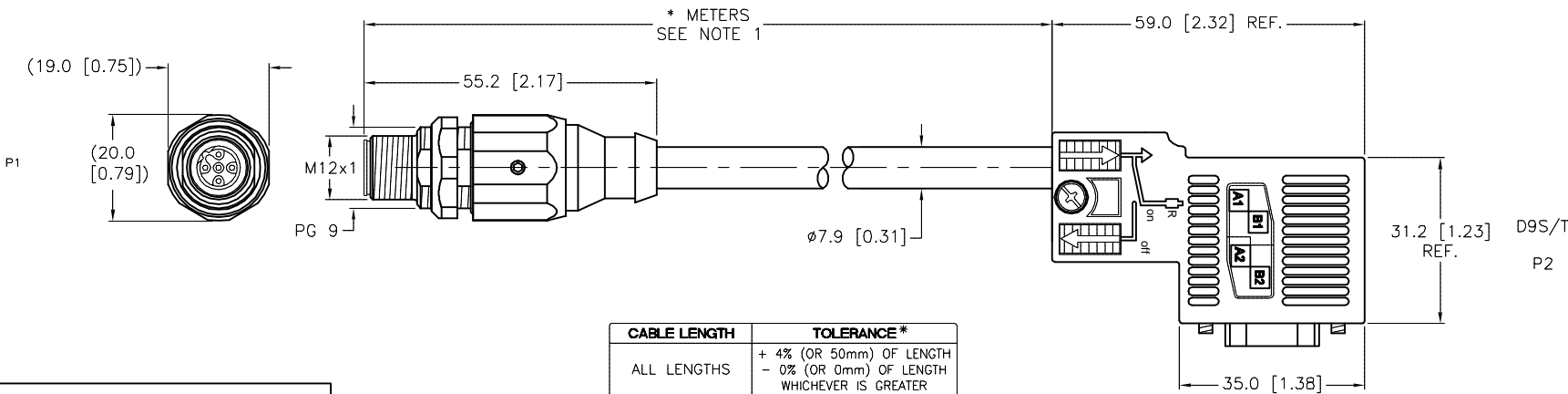
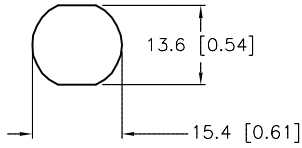


| MALE END VIEW | MALE END VIEW | WIRING DIAGRAM | SPECIFICATIONS | |
|---|--|--|--|--|
|  <p>1 = N/C 2 = GREEN (BUS_A) 3 = N/C 4 = RED (BUS_B) 5 = BARE (SHIELD)</p>   |  <p>1 = N/C 2 = N/C 3 = BUS_B (RED) 4 = N/C 5 = N/C 6 = N/C 7 = N/C 8 = BUS_A (GREEN) 9 = N/C</p> |  | CONTACT CARRIER MATERIAL/COLOR (P1) | TPU/BLACK |
| | | | MOLDED HEAD MATERIAL/COLOR (P1) | TPU/BLACK |
| | | | CONTACT MATERIAL/PLATING (P1) | BRASS/GOLD |
| | | | COUPLING NUT MATERIAL/PLATING (P1) | BRASS/NICKEL |
| | | | HOUSING MATERIAL/COLOR (P2) | NYLON/BLACK |
| | | | RATED CURRENT [A] | 4.0 A |
| | | | RATED VOLTAGE [V] | 250 V |
| | | | OUTER JACKET MATERIAL/COLOR | TPU/VIOLET |
| | | | CONDUCTOR INSULATION MATERIAL | POLYETHYLENE |
| | | | NUMBER OF CONDUCTORS [AWG] | 2x22 AWG (SHIELDED DATA PAIR w/ 22 AWG DRAIN WIRE) |
| | | | SHIELDING | ALUM. MYLAR PLUS TINNED COPPER BRAIDED |
| | | | TEMPERATURE RANGE (P2) | -25°C to +60°C (-13°F to +140°F) |
| | | | PROTECTION CLASS | NEMA 1,3,4,6P AND IEC IP68 (IP20 (P2)) |
| | | | INCLUDES PROFIBUS TERMINATING RESISTOR | YES |
| | | | MAX. PANEL THICKNESS | 3.0mm [0.12"] |



TYPICAL PANEL CUTOUT



NOTES:

1. "*" INDICATES CABLE LENGTH IN METERS. CONTACT TURCK TO ORDER SPECIFIC LENGTHS.

| CABLE LENGTH | TOLERANCE* |
|--------------|---|
| ALL LENGTHS | + 4% (OR 50mm) OF LENGTH - 0% (OR 0mm) OF LENGTH WHICHEVER IS GREATER |
| STRIP LENGTH | TOLERANCE* |
| 0-7mm | ±0.5mm |
| 8-29mm | ±1.0mm |
| 30-49mm | ±2.0mm |
| 50-69mm | ±3.0mm |
| 70-100mm | ±4.0mm |
| OVER 100mm | ±5.0mm |

* UNLESS OTHERWISE SPECIFIED

SOURCE DRAWING - FOR REFERENCE ONLY

| | | | | | | | | | | | | | | |
|---|--|--|--|-----|------------------------------------|---------|--|--|--|-------|--|--|--|--|
| <div><div></div><div>→</div><div>←</div><div>15.4 [0.61]</div></div> | | | | | RELATED DOCUMENTS | | 3RD ANGLE PROJECTION | | THIS DRAWING IS CONFIDENTIAL AND THE PROPERTY OF TURCK INC. USE OF THIS DOCUMENT WITHOUT WRITTEN PERMISSION IS PROHIBITED. | | <div>3000 CAMPUS DRIVE MINNEAPOLIS, MN 55441 1-800-544-7769 (763) 553-7300 (763) 553-0708 fax www.turck.us</div> <div>TURCK</div> | | | |
| NOTES: 1. "*" INDICATES CABLE LENGTH IN METERS. CONTACT TURCK TO ORDER SPECIFIC LENGTHS. | | | | | 1. 2. 3. 4. | | | | | | | | | |
| | | | | | MATERIAL | | ALL DIMENSIONS DISPLAYED ON THIS DRAWING ARE FOR REFERENCE ONLY | | DRFT RDS | | DATE 12/21/07 | | DESCRIPTION FSSDWE D9S/T 456-*M | |
| | | | | | | | | | DSGN | | SCALE 1 = 1.3 | | | |
| FINISH | | | | | CONTACT TURCK FOR MORE INFORMATION | | <div>UNIT OF MEASUREMENT</div> <div>MILLIMETER [INCH]</div> <div>DO NOT SCALE THIS DRAWING</div> | | IDENTIFICATION NO. | | REV G | | | |
| | | | | | | | | | FILE: 777020781 | | SHEET 1 OF 1 | | | |
| G | DRAWING PROCESSED AS PART OF ECO 33971 | | | CBM | | | | | 04/06/11 | 33971 | | | | |
| REV | DESCRIPTION | | | BY | DATE | ECO NO. | | | | | | | | |